

TECHNICAL SPECIFICATIONS

Registration: 5878-YC

Truck Model: SCANIA

Fabrication Date: 1999

KM: 186.961

Crane Model: Palfinger PK66002

Crane Fabrication date: 2005

Crane Hours: 10.472

Radio remote control winch



Truck mounted crane PK 66000/66002 JIB

Technical data of the crane

- Winch with a capacity for 2.000 kg at direct pull and 4.000 kg with double line.

Maximum horizontal reach:

- PK66002: 16 m.
- PK66002 JIB: 30 m. (16 m. + 14 m. JIB).

Maximum load capacity at the base of the crane:

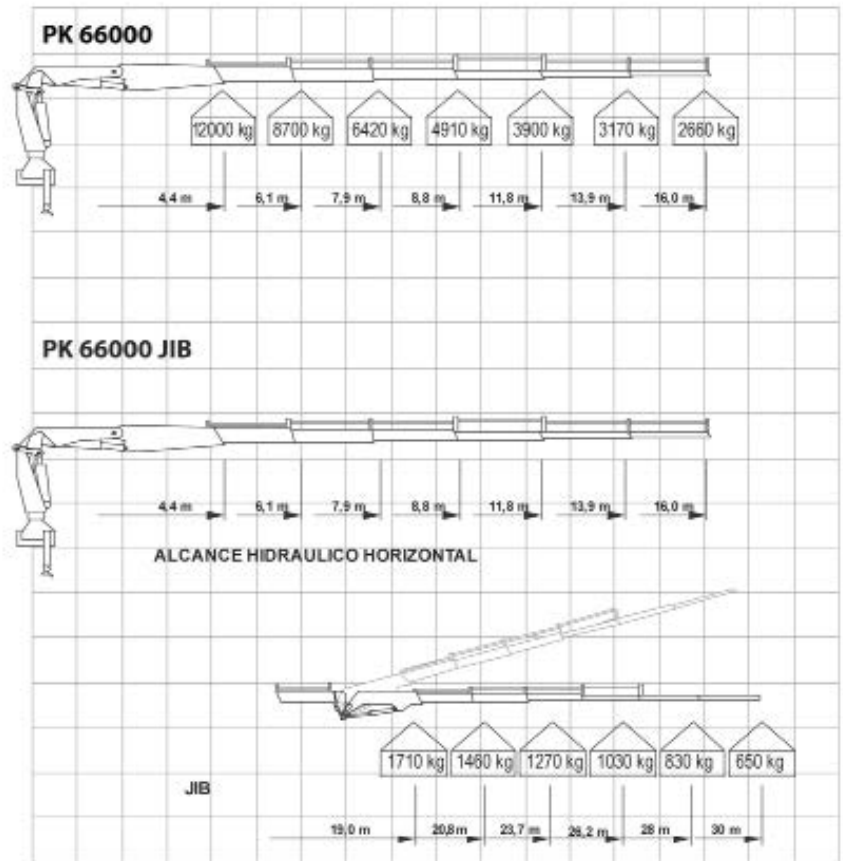
- PK 66002: 12.000 Kg.
- PK 66002 JIB: 1.710 Kg.
- Max width in working position: 8,6 m.
- HPLS system, which increases the crane's power by 13% and gives it more precision when maneuvering.
- Due to its weight and load capacity, the crane is loaded onto the rear of the truck.

Characteristics of the truck

- Width of the truck: 2,50 m.
- Length of the truck: 10 m.
- Load capacity: 8.000 kg.
- Length of cart: 5,5 m.

Utilities / Applications

- Power, security, precision, ability and effectiveness, with the highest technology.
- Vehicle equivalent to a telescopic crane of 30 t.



Diagramas de carga al 90% de su rendimiento

