

TECHNICAL SPECIFICATIONS

Registration: 1024 CCP

Truck Model: MAN

Truck Fabrication Data: 2002

Concrete Pump Model: PUTZMEISTER 36 m

Km: 110.397

Hours of Concrete Pumping: 6.761

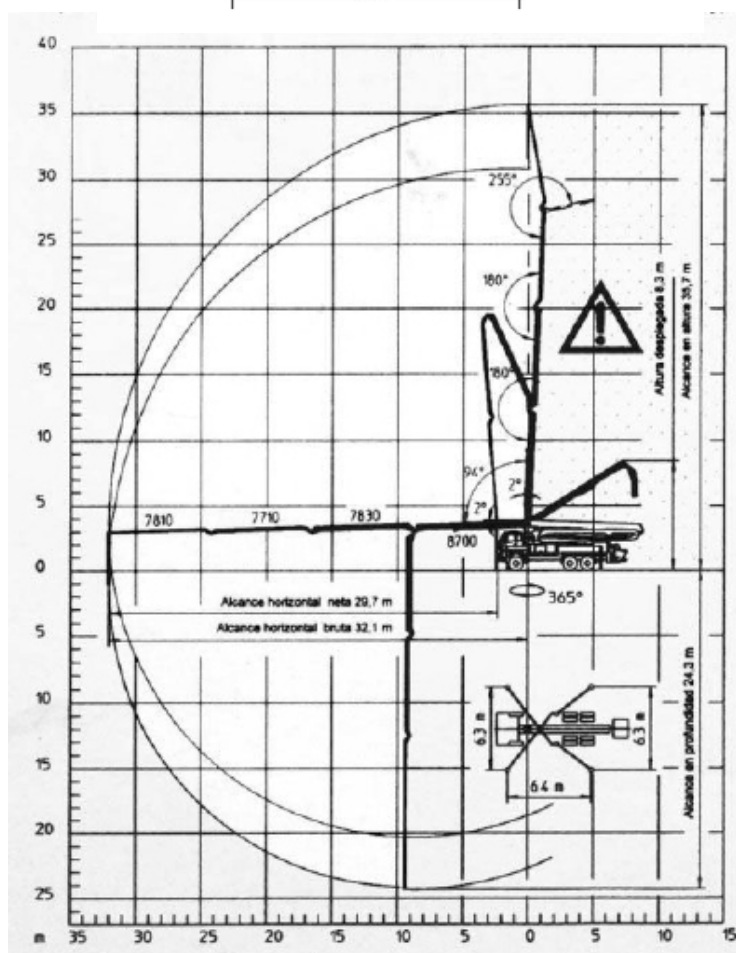
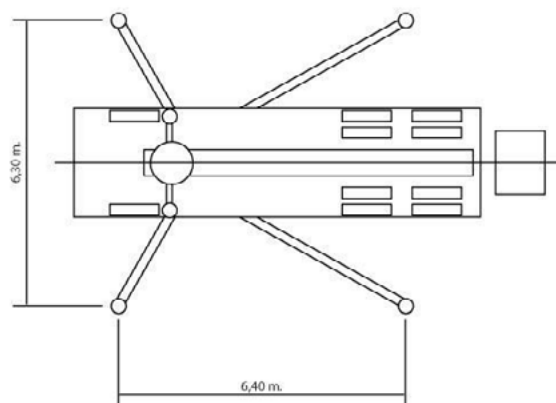
TRANSGRUMA
MÁQUINAS DE CONCRETO



A four-armed, flexible and articulated boom provides great reach. The opening of the diagonal supports facilitates access to the concreting points. It is a compact machine with great manoeuvrability. Concrete lifting pump of 36 m. Mounted on a three-axe chassis. The Z-folding facilitates work in confined spaces with reduced heights. The pumping performance is twice as high as that of the 32 m. Pump.

TECHNICAL SPECIFICATIONS

FOLDING TYPE	Z-C
VERTICAL RANGE	35,8 m.
NUMBER OF ARMS	4
HORIZONTAL REACH	24,3 m.
DEEP REACH	31,0 m.
MINIMUM DEPLOYMENT HEIGHT	8,3 m.
END SECTION OF HOSE	4 m.
CIRCLE ROTATION	365°.
DIAMETER OF THE PUMPING PIPE	125 mm.
THROUGHPUT RATE	160 m ³ /H.
MAXIMUM PRESSURE STABILISERS ON THE GROUND	kN. 200 T.20



www.transgruma.com

C/ Palier 12 - 14

Polígono Industrial El Portillo

Ciudad del automóvil

28914 Leganés (Madrid)



649 896 568